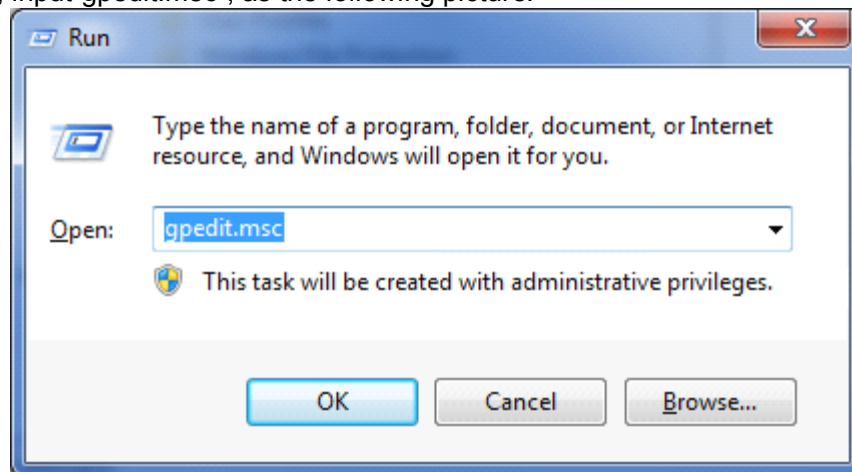


User Manual to use NTP server under Windows XP

Choose the file--“Open the NTP services”, double click “windowsXP_ntp.reg”, NTP server will work.

User Manual to use NTP server under Win7

click“start”----“run”, input“gpedit.msc”, as the following picture:



Pop up the policy windows:

Local Group Policy Editor

File Action View Help

Local Computer Policy

- Computer Configuration
 - Software Settings
 - Windows Settings
 - Administrative Templates
 - Control Panel
 - Network
 - Printers
 - System
 - Credentials Delegation
 - Device Installation
 - Device Redirection
 - Disk NV Cache
 - Disk Quotas
 - Distributed COM
 - Driver Installation
 - Enhanced Storage Access
 - Filesystem
 - Folder Redirection
 - Group Policy
 - Internet Communication Management
 - iSCSI
 - Kerberos
 - Locale Services
 - Logon
 - Net Logon
 - Performance Control Panel
 - Power Management
 - Recovery
 - Remote Assistance
 - Remote Procedure Call
 - Removable Storage Access
 - Scripts
 - Shutdown Options
 - System Restore
 - Troubleshooting and Diagnostics
 - Trusted Platform Module Services
 - User Profiles
 - Windows File Protection
 - Windows HotStart
 - Windows Time Service**
 - Time Providers
 - Windows Components
 - All Settings
- User Configuration
 - Software Settings
 - Windows Settings
 - Administrative Templates

Windows Time Service

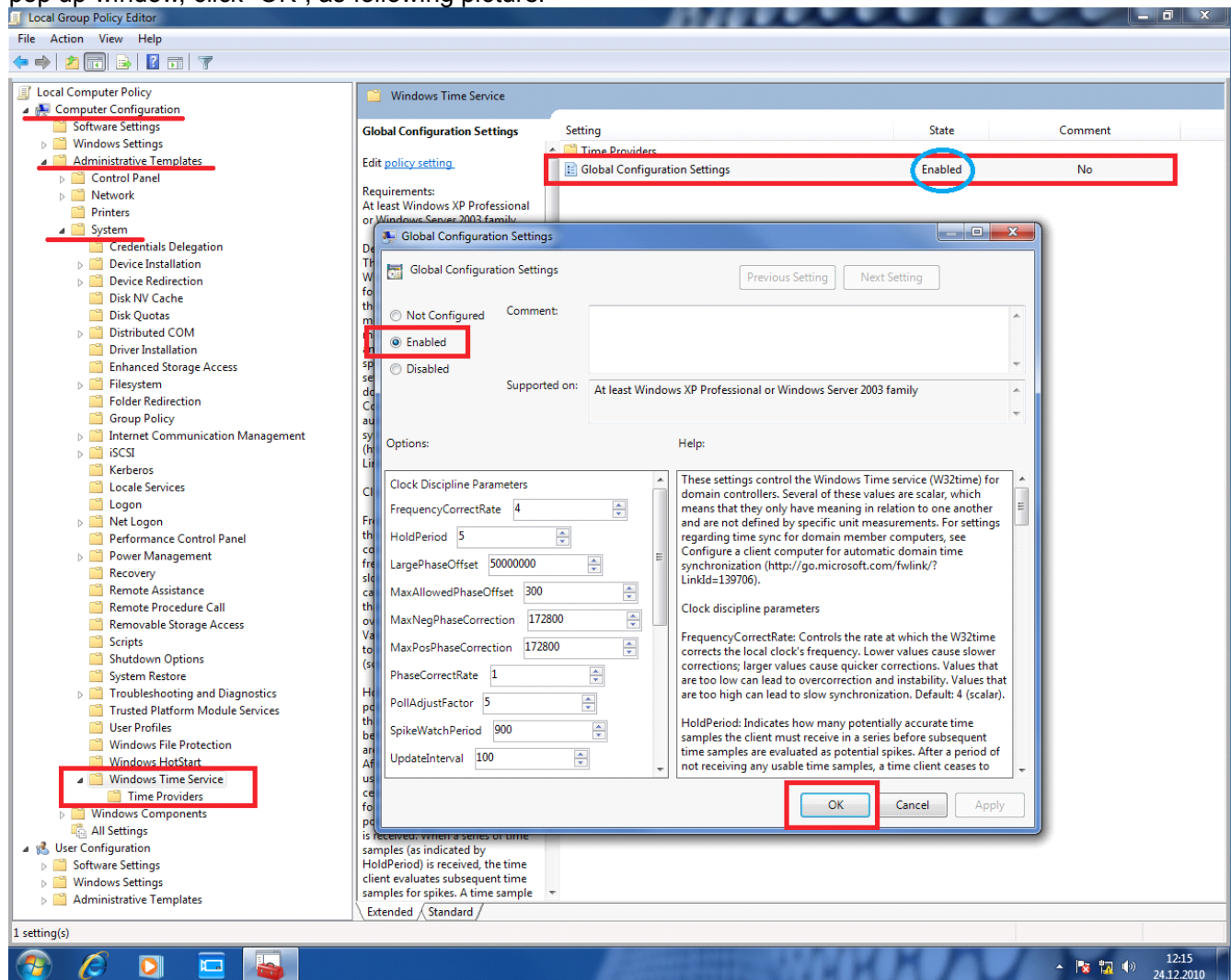
Select an item to view its description.

| Setting | State | Comment |
|-------------------------------|----------------|---------|
| Time Providers | | |
| Global Configuration Settings | Not configured | No |

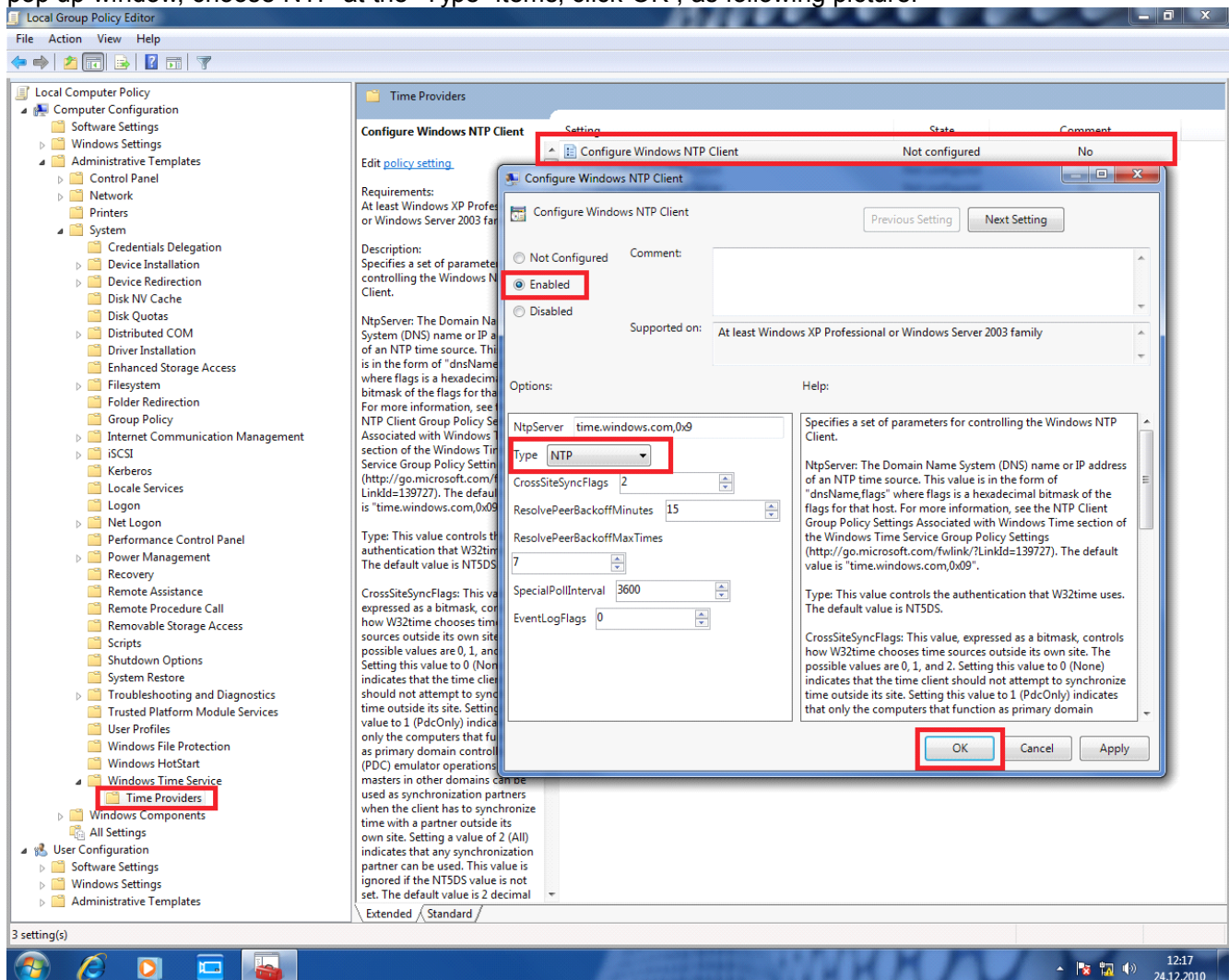
Extended Standard

1 setting(s)

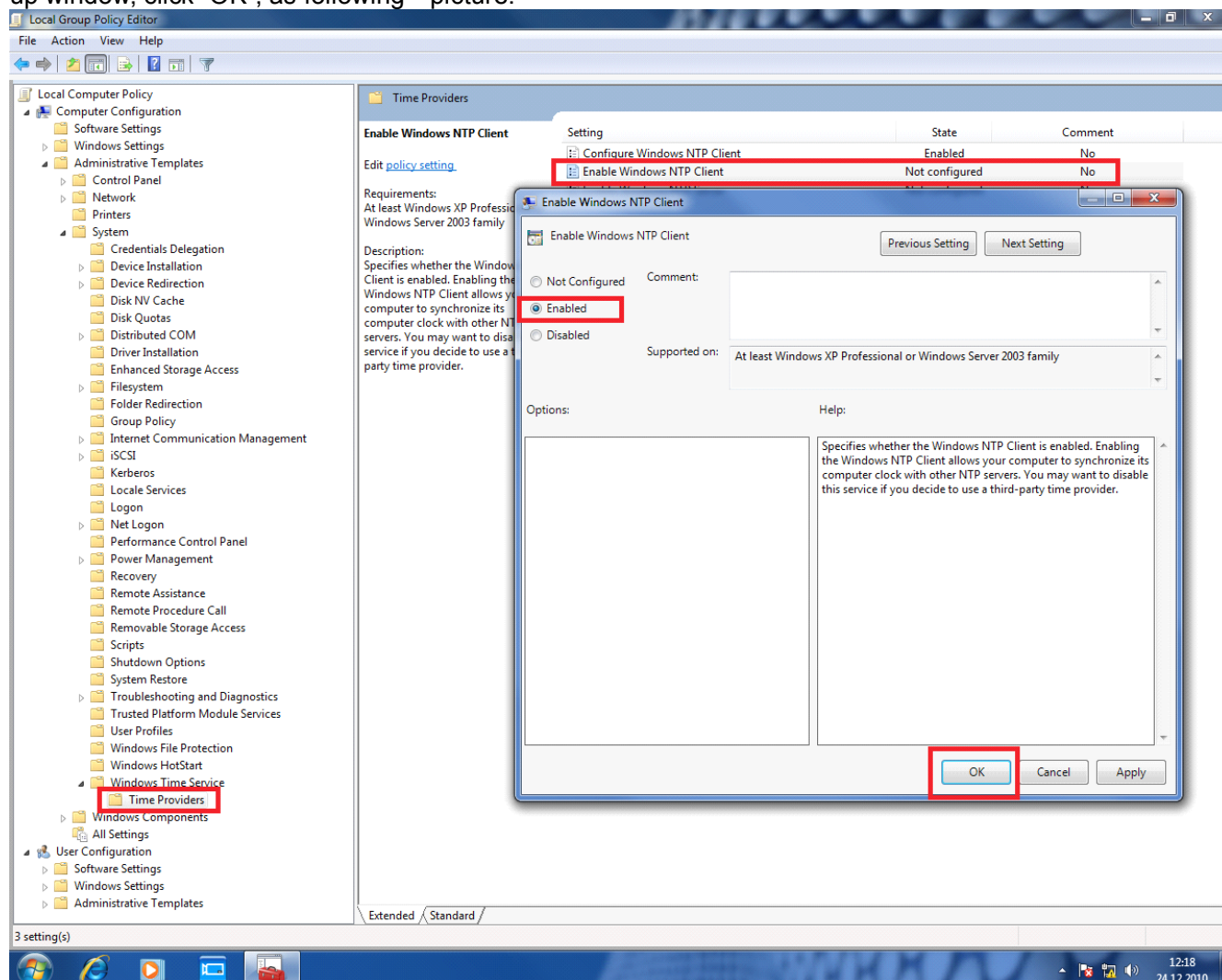
Choose “Computer Configuration”--“Administrative Templates”--“System”--“Windows Time Service”, Choose “Global configuration Settings” at the right side, double click left bottom of mouse, choose “Enable” from the pop up window, click “OK”, as following picture:



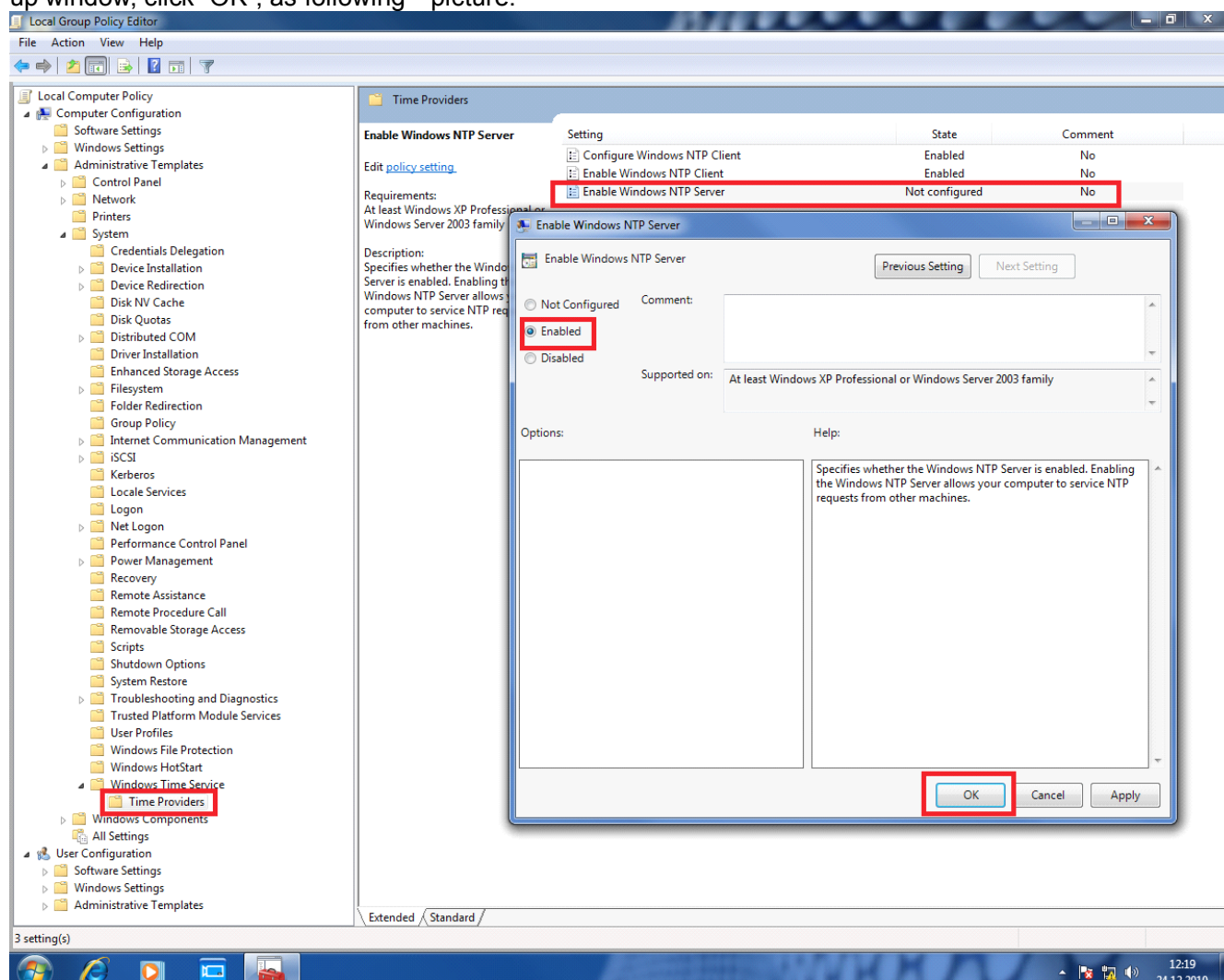
Choose "Computer Configuration"--"Administrative Templates"--"System"--"Windows Time Service"--"Time Providers", Choose "Configure Windows NTP Client" at the right side, double click, Choose "Enable" from the pop up window, choose "NTP" at the "Type" items, click "OK", as following picture:



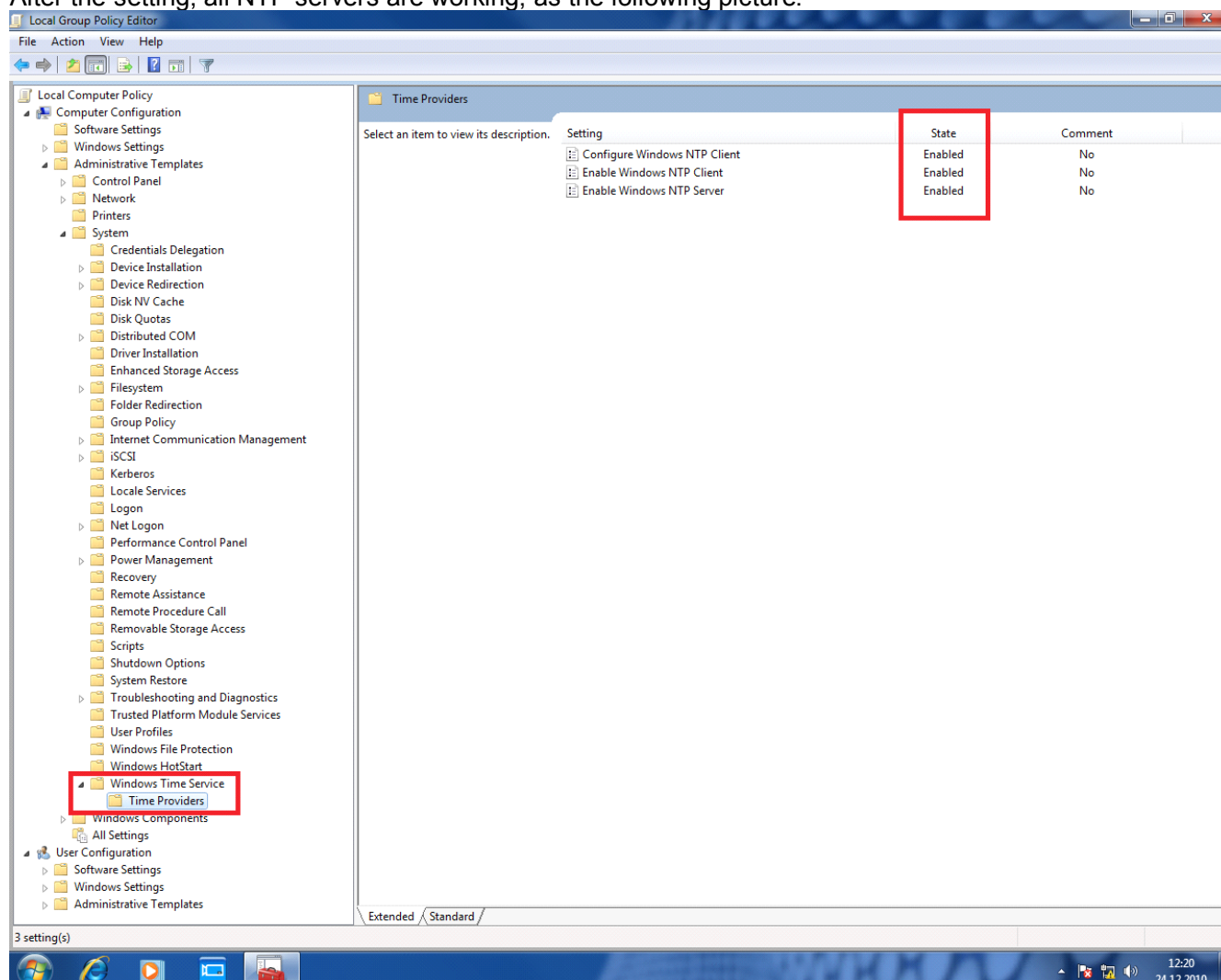
Choose "Computer Configuration"--"Administrative Templates"--"System"--"Windows Time Service"--"Time Providers", Choose "Enable Windows NTP Client" at the right side, double click , choose "Enable" at the pop up window, click "OK", as following picture:



Choose “Computer Configuration” -- “Administrative Templates” -- “System” -- “Windows Time Service” -- “Time Providers”, Choose “Enable Windows NTP Client” at the right side, double click , choose “Enable” at the pop up window, click “OK”, as following picture:



After the setting, all NTP servers are working, as the following picture:



Log in the landing interface from IE Web, choose "internet service" -- "NTP", input the IP address of another PC whose NTP already working, click "confirm", finish correcting time. Thereafter, IP Camera will correct time every one hour with NTP server.